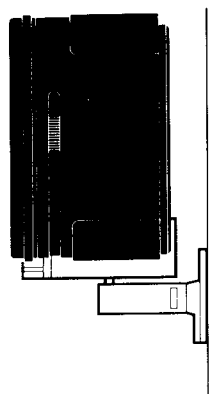


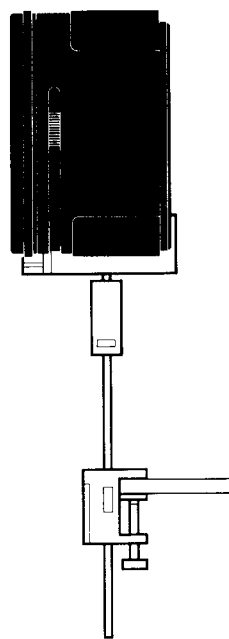
Optional Mounting Brackets

The JBL Pro 3 is designed for use with two types of special mounting brackets which are available from your JBL dealer. Each enables you to securely place the Pro 3 in a wide range of locations. See figure below.

MTC-2 Ceiling/Wall Mount Bracket

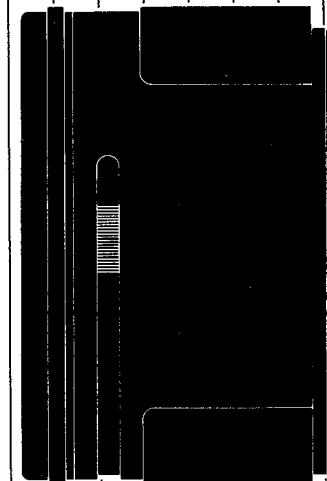
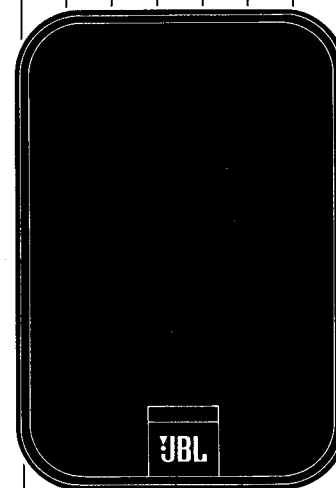


MTC-3 Shelf Mount Bracket



pro III

T I T A N I U M



Personal Size Monitor Loudspeaker
Instruction Manual

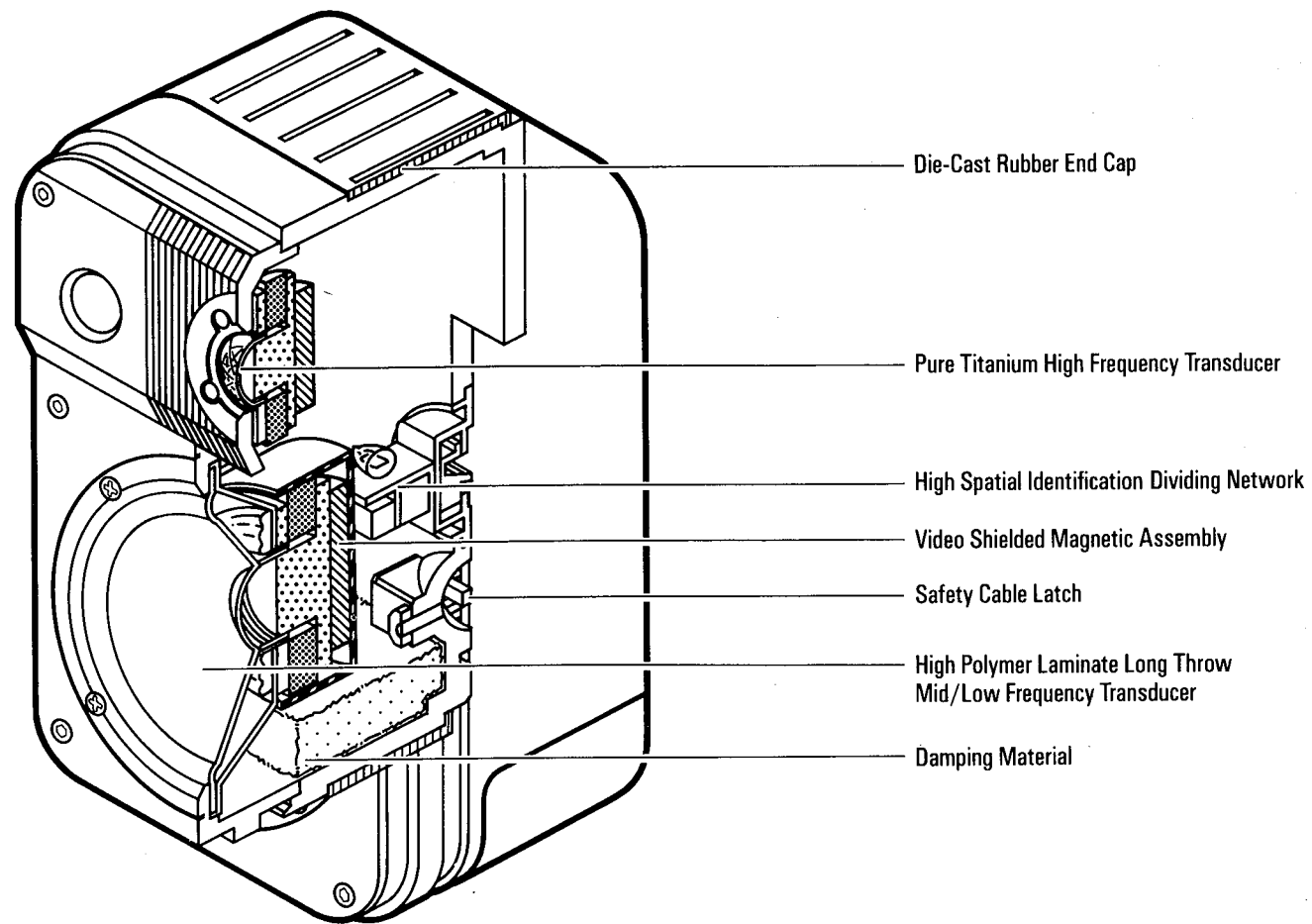
JBL Incorporated
Northridge CA USA

Printed in Japan



A Harman International Company



Pro III*Introduction*

Thank you for purchasing JBL Pro 3 Monitors. Their remarkable design enables them to be used in a wide variety of applications including video systems, protected outdoor sound systems and any place a compact, yet high fidelity sound source is preferred. Pro 3 Monitors feature a Titanium High Frequency Unit which uses exclusive JBL technology to offer unsurpassed frequency response, low distortion and wide dynamic range.

First, the Paperwork

Before proceeding, be sure to put your sales receipt in a safe place. It is necessary for proof of purchase, warranty repairs and insurance purposes. Also fill out the enclosed warranty card and mail it.

Acoustics and Proper Mounting Locations

Where you place your JBL Pro 3 Monitors will have a great effect on how they sound. Speakers work with—or are hindered by—the acoustics of a room. Proximity to walls and corners and even how high or low they are placed on bookshelves all have marked effects on performance.

Placement for Best Stereo Imaging In determining how far apart to space your Pro 3's, look at the angle between you and the two speakers. Try to achieve reasonably close to a 60 degree angle. This means that if the speakers are close together the optimum listening point is relatively close, too. Conversely, if the speakers are farther away from you, they should also be farther apart from one another. If you are placing your Pro 3's on their sides, make sure that the tweeters (smaller speaker elements) are on the outside (see Fig. 2).

Placement for Best Bass Response Careful positioning of your Pro 3's, can maximize their bass output. A speaker placed close to a surface in the room such as a floor, ceiling or wall will "couple" to that surface resulting in increased bass. Placing a speaker with its back to one wall will give you slightly increased bass. Putting the speaker in a corner halfway between the ceiling and floor (through use of optional Pro 3 Mounting Brackets) will give you even more bass.

Placement for Best Treble Dispersion High musical sounds such as vocals, violins, lead guitars, cymbals, etc. are more directional than bass and midrange. It is important that they be as close to ear level as possible. Placing your JBL Pro 3's too close to the floor will result in loss of high notes

which end up being directed at your kneecaps or into the carpet. If your particular application requires low placement, consider the use of optional Mounting Brackets. These allow you to tilt the Pro 3 up towards ear level, or physically elevate it using an adjustable extension (see Mounting Bracket Illustrations). If you are placing the speakers higher than ear level (such as on a shelf or on wall brackets) invert the speaker so that the tweeter is BELOW the midrange/woofer (see Fig. 2).

Note that the JBL Pro 3 insignia on each speaker may be rotated to any of four positions so that it is upright regardless of speaker orientation.

Specialized Placements JBL Pro 3 Monitors make excellent video extension speakers. Their internal shielding means you can place them directly next to a video monitor without causing picture distortion. They may also be wall mounted at the rear of a room for use as rear channel surround sound sources.

While Pro 3's are not waterproof, they are extremely weather-resistant and may be placed outside in sheltered areas such as patios or under roof eaves. Make sure, however, that precipitation and direct sunlight do not reach them.

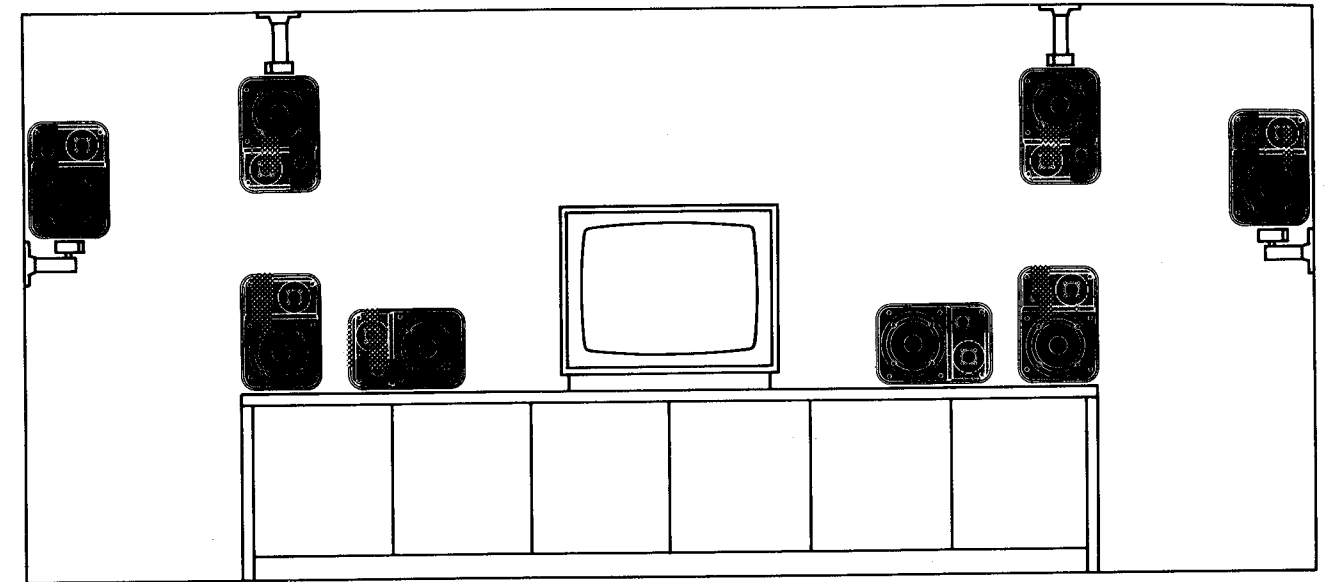


Figure 2 Possible Pro III Speaker Locations

Hooking Up Your Pro III Monitors

What Kind of Wire to Use For best results, we recommend the use of specially designed ultra-low resistance, oxygen-free speaker wire. Available from your JBL dealer, it allows the maximum power and frequency bandwidth and represents an important link in the sound chain.

However, any insulated, multi-stranded copper wire may be used, provided it is of the proper gauge (thickness). The easiest to obtain is ordinary lamp cord, available at hardware stores. The

size to use depends on the distance between your amplifier and your Pro 3 Monitors. The table below shows the allowable run lengths for different wire gauges as measured one way from your amplifier to the speaker.

Wire Length	Gauge of Copper Wire
• Up to 18 ft	• 18 gauge
• Up to 30 ft	• 16 gauge
• Up to 48 ft	• 14 gauge
• Almost any distance	• Special speaker cable

