



A Harman International Company

JBL, Inc.
8500 Balboa Boulevard, Northridge, CA 91329 USA
1.516.255.4525
www.jbl.com

©2006 Harman International Industries, Incorporated. All rights reserved.
JBL, Harman International, JBL On Tour and Creature are registered trademarks,
and JBL On Time, JBL Radial, JBL Spot, JBL Spyro and Duet are trademarks, of
Harman International Industries, Incorporated.

* The trademark On Stage is used with permission of OSA International, Inc.

Specifications are subject to change without notice.

iPod not included. iPod is a registered trademark of Apple Computer, Inc.

The Bluetooth® word mark and logos are owned by the Bluetooth SIG, Inc. and any use of such
marks by JBL is under a license agreement.

Part No. JBLHDPHONES8/06 Printed 8/06

Designed, edited and digitally produced by Harman Consumer Group Marketing & Design Center,
Woodbury, NY.



headphones

Legendary JBL sound. For your ears only.



>> JBL® has been helping musicians sound their best – for audiences large and small – for more than 60 years. Now we’re helping musicians sound their best for you, and you alone. JBL delivers all the sonic realism and deep, distortion-free bass you expect from the world’s leading professional audio brand – through compact, lightweight headphones that can go with you anywhere.

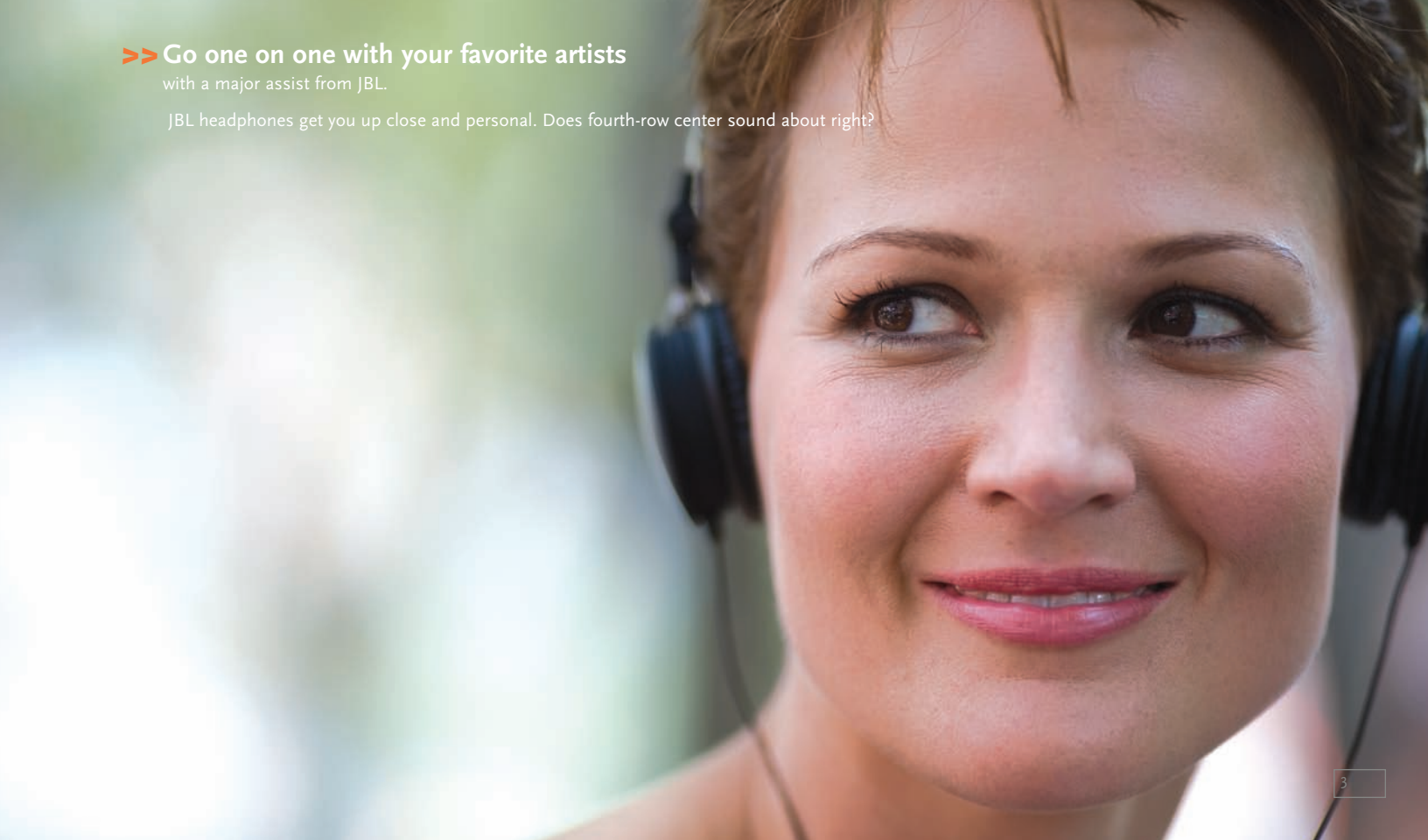
>> Choose high-performance earphones so comfortable, you may forget you’re wearing them. Or noise-canceling headphones that let you tune out the rest of the passengers, or the rest of the world. Or Bluetooth®-enabled headphones that connect wirelessly to your iPod®. JBL headphones are all about you and your music, and how and where you like to enjoy it. Don’t worry about everyone else – they can get their own set.

- >> JBL Reference 200 Series
Lightweight Earphones 4–5
- >> JBL Reference 400 Series
On- and Over-Ear Headphones 6–7
- >> JBL Reference 500 Series
Noise-Canceling Headphones 8–9
- >> JBL Reference 600 Series
Bluetooth Wireless Headphone 10–11
- >> Technical Specifications 12–13
- >> JBL Multimedia Products 14–15

>> Go one on one with your favorite artists

with a major assist from JBL.

JBL headphones get you up close and personal. Does fourth-row center sound about right?



JBL Reference 200 Series

>> Earphones have always been a smaller, more portable alternative to traditional headphones, and JBL Reference 200 earphones are certainly that. But Reference 200 earphones are designed to perform more like their larger counterparts. Is it possible to get realistic, full-spectrum sound from virtually weightless earphones that can easily slip into a pocket? Would we have brought it up if the answer were no?

Compatible with:



JBL Reference 210

- >> Lightweight in-ear design
- >> In-line volume control
- >> True JBL performance
- >> Comfortable foam ear pads
- >> Tangle-free wire management system
- >> Compact carrying case



JBL Reference 220

- >> Lightweight in-ear design
- >> High-quality miniature transducers outperform other earphone systems
- >> Wear them your way: foam ear pads, silicone in-ear inserts, detachable ear cuffs or a foldable under-chin strap
- >> Flexible cloth-covered wires
- >> Three ear-piece sizes included, for a personal fit



Okay, so maybe the world doesn't revolve around you. But at least you get to pick all the music.

>> **There are earphones.**
And then there are JBL earphones.



Will you use them to help you concentrate? Or simply get away from it all?

>> Go where you have to go.
But be somewhere else entirely.

JBL Reference 400 Series

>> Your daily routine may take you to all kinds of places where you don't want to be. But JBL Reference 400 headphones are your ticket out. With large, accurate transducers in compact on- and over-ear designs, 400 Series headphones deliver rich, powerful sound with plenty of the bass punch for which JBL is famous. If compact-but-powerful sounds like a winning combination, brace yourself for another one: lightweight-but-rugged. JBL 400 Series headphones are designed for hours of comfortable use.

Compatible with:



JBL Reference 410

- >> Compact on-ear design
- >> 40mm Transducers deliver JBL realism and great bass response
- >> Adjustable padded headband
- >> Folds for easy storage and transport



JBL Reference 420

- >> Midsize over-ear design
- >> Advanced transducers deliver unsurpassed fidelity
- >> Crystal-clear high- and mid-frequency response, distortion-free bass
- >> Genuine leather headband and ear cups
- >> Innovative headband designed for hours of comfort
- >> Single cloth-covered side cable eliminates clutter



JBL Reference 500 Series

>> The world can be a noisy place, often filled with people who didn't get the memo about cell phone courtesies. That's why JBL developed Reference 500 Series noise-canceling headphones. Now you can concentrate on your favorite music in all its full-spectrum glory, without the distraction of all the commotion around you. Choose a compact, on-ear model that automatically blocks out up to 70% of ambient noise, or an over-ear design that lets you dial up your preferred level of glorious silence, from library-like to complete-and-total.

JBL Reference 510

- >> Compact on-ear design
- >> 40mm Transducers deliver JBL realism and great bass response
- >> Eliminates up to 70% of ambient noise
- >> Ideal for airplanes, commuter trains
- >> Inline battery-powered control
- >> Adjustable padded headband
- >> Folds for easy storage



JBL Reference 520

- >> Midsize over-ear design
- >> Advanced transducers deliver unsurpassed fidelity
- >> Crystal-clear high- and mid-frequency response, distortion-free bass
- >> Four noise-canceling settings, including total isolation
- >> Voice pass button for all settings
- >> Genuine leather headband and ear cups
- >> Innovative headband designed for hours of comfort
- >> Single cloth-covered side cable eliminates clutter



Compatible with:



>> 100% of what you want.
70 to 100% less of everything else.

It may look like Grand Central Station. But it sounds like Carnegie Hall.



>> The most advanced audio technologies meet
the most advanced communications technologies.

JBL Reference 600 Series

>> Bluetooth® isn't just for cell phone headsets any more. The JBL 600 Series combines the sound quality of high-end headphones with the convenience of Bluetooth wireless technology. So now you can enjoy and control your music without wires – and without digging your iPod® out of your backpack or briefcase. Bluetooth is about making things easier, and JBL is about making things sound better. Together, well, maybe “paradigm shift” is too strong, but you get the idea.

Compatible with:



JBL Reference 610

- >> Midsize over-ear design
- >> Wired or wireless functionality
- >> Connects wirelessly to iPod
- >> Adjust volume, select tracks, play and pause, and browse menus when in iPod navigation mode, all from the ear cup controls
- >> Advanced transducers deliver unsurpassed fidelity
- >> Crystal-clear high- and mid-frequency response, distortion-free bass
- >> Genuine leather headband and ear cups
- >> Innovative headband designed for hours of comfort



>> **Compare and contrast**
with everything else out there.



	JBL Reference 210	JBL Reference 220	JBL Reference 410	JBL Reference 510
Color:	Black/Chrome	Black or White with Chrome	Black	Black
Input Requirement:	Main connection 3.5mm mini jack	Main connection 3.5mm mini jack	Main connection 3.5mm mini jack	Main connection 3.5mm mini jack
Power:	15mW	5mW	50mW	50mW
Sensitivity:		94dB/mW @ 1kHz	125dB SPL/V 110dB SPL/mW	125dB SPL/V 110dB SPL/mW
Frequency Response:	17Hz – 23kHz	20Hz – 20kHz	10Hz – 20kHz (-10dB points)	12Hz – 28kHz
Dimensions:	Diameter – 15mm Wire length – 115cm	Diameter – 13.5mm Wire length – 111cm	Wire length – 1.5m	Wire length – 180cm
Weight:	5.2g	4g (without cord)	73g (without cord)	73g (without cord)
Input Impedance:	17 Ohms	16 Ohms	32 Ohms	32 Ohms
Noise-Canceling:				Max -25dB > 1.5kHz Max -15dB < 1.5kHz
Compatibility:	All audio output devices with a 3.5mm mini jack.			



	JBL Reference 420	JBL Reference 520	JBL Reference 610
Color:	White or Black with Chrome	White or Black with Chrome	White or Black with Chrome
Input Requirement:	Main connection 3.5mm mini jack	Main connection 3.5mm mini jack	iPod® dongle connects to iPod models 4th generation and above, Bluetooth® A2DP and AVRCP profile streaming
Power:	2 x 50mW	85mW	40mW
Sensitivity:	91dB SPL/mW @ 1kHz	96dB SPL/mW @ 1kHz	96dB SPL/mW @ 1kHz
Frequency Response:	10Hz – 20kHz (-10dB)	10Hz – 20kHz (-10dB)	10Hz – 20kHz (-10dB)
Dimensions:	Diameter – 102mm Main audio cable – 1.5m Extension cable – 1m	Diameter – 102mm Main audio cable – 1.5m Extension cable – 1m	Diameter – 102mm Hardwire audio cable – 1.75m
Weight:	170g (without cord)	192g (without cord)	212g (without cord)
Input Impedance:	32 Ohms	32 Ohms	32 Ohms
Noise-Canceling:		Max -25dB > 1.5kHz Max -15dB < 1.5kHz	
Compatibility:	All audio output devices with a 3.5mm mini jack.		May be compatible with Bluetooth devices with A2DP and AVRCP profiles.

>> If you're in the mood to share your music,
JBL suggests...



JBL On Stage™ II
The iPod dock that knows how to party.



JBL On Stage™ Micro
Macro performance, AC or battery power.



JBL On Tour®
Great sound, wherever your travels take you.



JBL On Time™
The clock radio that's playing your song.



JBL Radial™
Surround your iPod with legendary JBL sound.



JBL Spot™
2.1-Channel sound, available in a range of colors and patterns.



JBL Spyro™
Multimedia sound gets personal.



JBL Creature® II
Plug-and-play nicer. Much nicer.



JBL Duet™
True JBL sound. Just two speakers.

>> Over the last few years, JBL has become a major manufacturer of award-winning loudspeaker systems for computers, the iPod® and other multimedia devices. Check out these and other innovative JBL systems at jbl.com or a retailer near you. They're small. They're cool. And they're pure JBL.