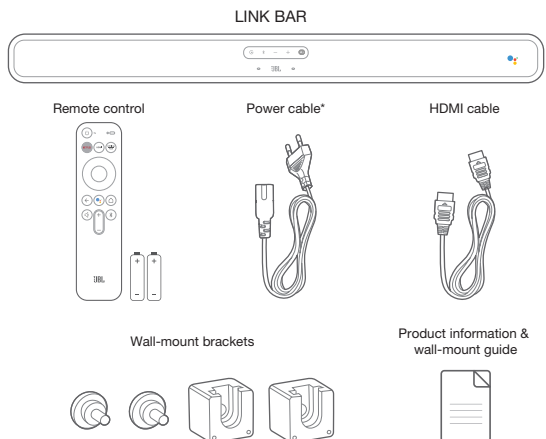




LINK BAR



1. What's in the box



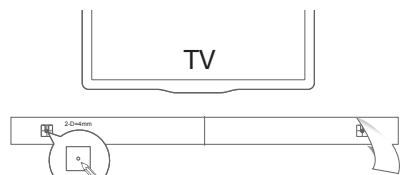
* Power cable types and numbers varied by regions.

2. Place your LINK BAR

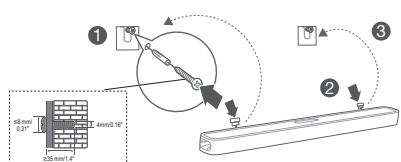
2a. Place the LINK BAR on the table

2b. Wall mount the LINK BAR

Use tape to stick the wall-mounted paper guide on the wall, push a pen tip through the center of each mounting hole to mark the wall-mounted bracket location and remove the paper.



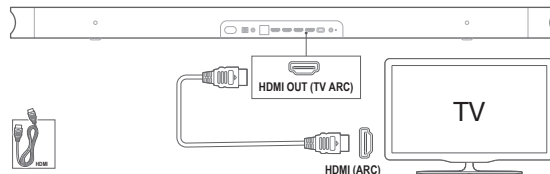
Screw the wall mount brackets on the pen mark; screw the threaded mounting post into the back of the LINK BAR, then hook it on the wall.



For complete information about using all of your JBL LINK BAR, download the full Owner's Manual from www.jbl.com

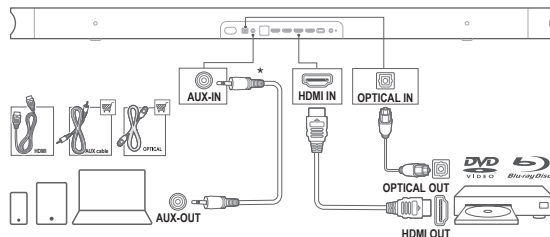
3. Connect your LINK BAR

3a. Connect LINK BAR to your TV by HDMI ARC



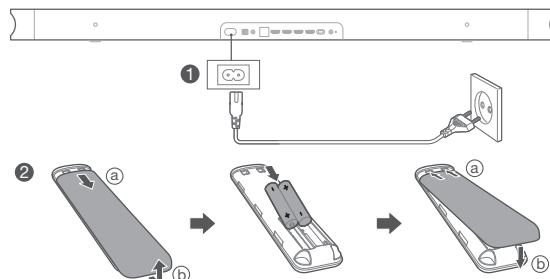
* Do confirm if HDMI CEC function on your TV is turned on.

3b. Connect LINK BAR to other devices



* AUX or Optical cable purchase separately

4. Power your LINK BAR and remote control



5. Follow the setup instruction on TV



* Make sure using a HDMI cable connect the HDMI OUT (TV ARC) connector on LINK BAR to the HDMI IN (ARC) on your TV

6. Control your LINK BAR

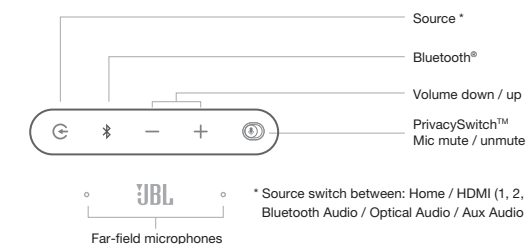
6a. Voice control



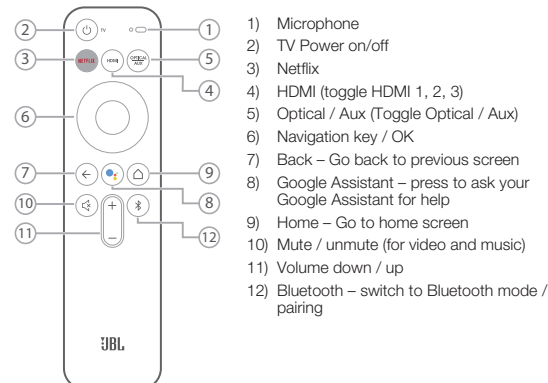
Just start with "OK Google"

- "Turn the TV on"
- "Search soccer highlights on YouTube"
- "Dim the lights"
- "Switch to HDMI 1"

6b. Top panel



6c. Remote control



7. Product Specification

- Model No.: LINK BAR
- Transducer: 2 x 20mm (0.8") tweeter, 4x (44x80)mm racetrack driver
- Total Maximum Power: 100W
- Frequency response: 75Hz-20kHz
- Signal-to-noise ratio: >85dBA
- Power Supply: 100-240V~50/60Hz
- HDMI Video Inputs: 3 (Support 4K UHD, HDMI 2.0)
- HDMI Video Output (with Audio Return Channel): 1 (Support 4K UHD, HDMI 2.0)
- HDCP Version: 2.2 and 1.4
- Ethernet: 10/100Mbps
- Dolby Digital support
- Bluetooth version: 4.2
- Bluetooth transmitter frequency range: 2402 – 2480MHz
- Bluetooth transmitter power: ≤ 9dBm
- Bluetooth transmitter modulation: GFSK, π/4-DQPSK, 8DPSK
- Wi-Fi network: 802.11a/b/g/n/ac (2.4GHz/5GHz)
- 2.4G Wi-Fi transmitter frequency range: 2412 – 2472MHz (2.4GHz ISM Band, USA 11 Channels, Europe and others 13 Channels)
- 2.4G Wi-Fi transmitter power: <20dBm
- 2.4G Wi-Fi modulation: DBPSK, DQPSK, CCK, QPSK, BPSK, 16QAM, 64QAM
- 5G Wi-Fi transmitter power: <20dBm
- 5G Wi-Fi modulation: QPSK, BPSK, QPSK, BPSK, 16QAM, 64QAM, 256QAM
- 5G Wi-Fi transmitter frequency range: 5.15 - 5.35GHz, 5.470 - 5.725GHz, 5.725 - 5.825GHz
- 5.8G Wireless transmitter frequency range: 5740-5840MHz
- 5.8G Wireless transmitter power: < 8dBm
- 5.8G Wireless transmitter modulation: GFSK
- Dimensions (W x H x D): 1020 x 60 x 93mm
- Gross Weight: 4.4kg
- Net Weight: 2.5kg

For Remote Control

- Bluetooth version: 5.0
- Bluetooth transmitter frequency range: 2402-2480MHz
- Bluetooth transmitter power: < 4dBm

Note: LINK BAR is intended to be used for streaming music. A consumer can stream Bluetooth audio to the speaker. A consumer can connect their speaker to the local Wi-Fi Network and stream music with Google Chromecast. In addition, the speaker will work with Google Home. This product is designed to be instantly on and ready to play music at a moment's notice, therefore, the Bluetooth and Wi-Fi connection must remain active at all times to ensure proper operation.

LINK BAR is in compliance with the European Union energy legislation. LINK BAR complies with European Commission Regulation (EC) No 1275/2008 (HiNA and (EU) No 801/2013 as a networked equipment with high network availability equipment and equipment with HiNA functionality).

Power consumption:
Off Mode: N/A
Standby: N/A
Network Standby: N/A
Time to standby: N/A
Active Standby*: 4.0W

*Active Standby: LINK BAR is connected to a wireless network but does not provide active audio functions. when LINK BAR is plugged into a wall socket, regardless whether it is muted or not, words "Hey Google" or "Ok Google" it is automatically on active standby mode. It will respond to you if you say the trigger.

