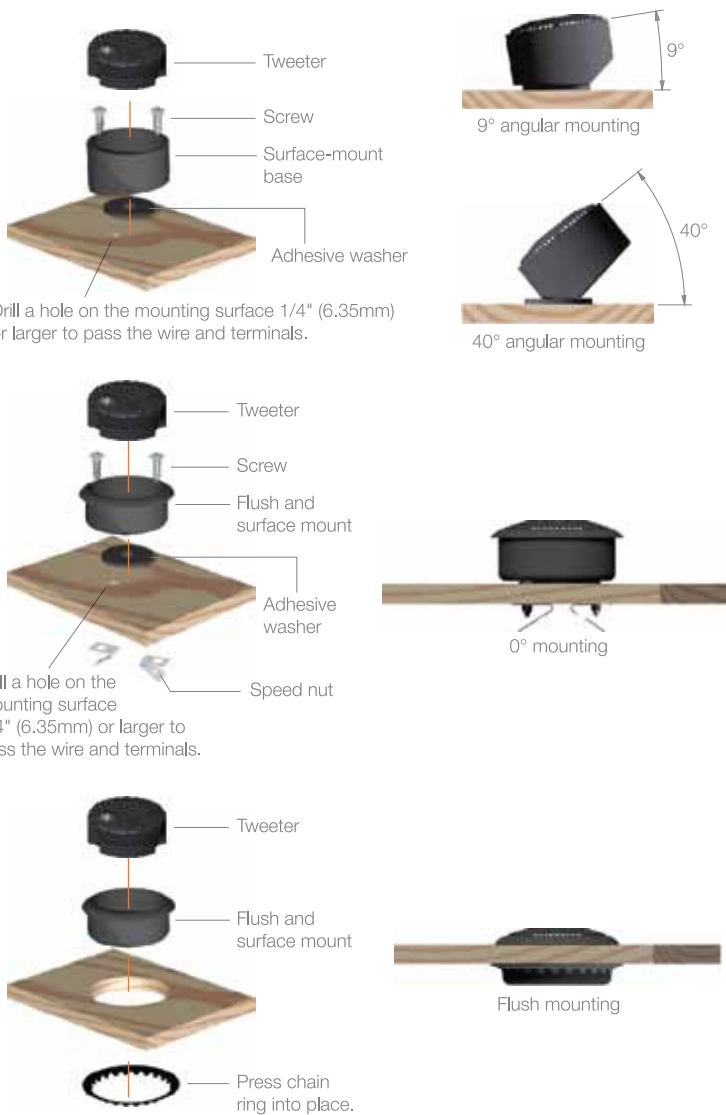
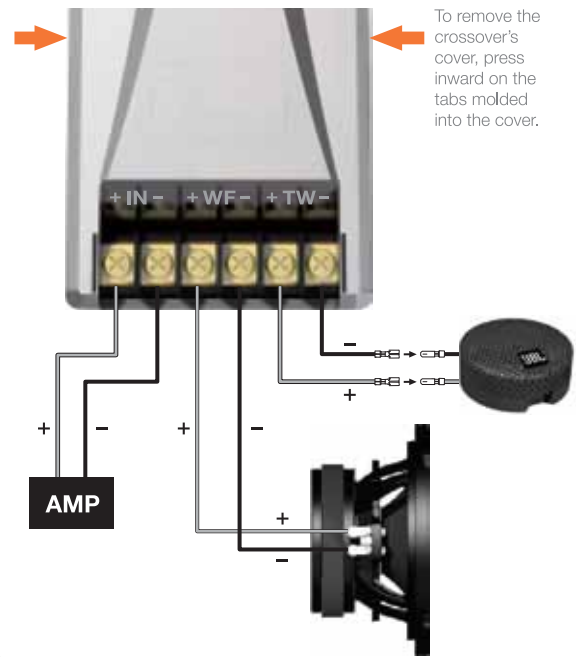


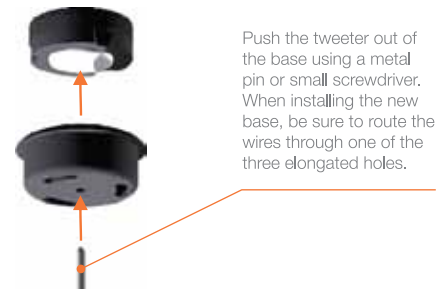
## MOUNTING OPTIONS



## MAKING THE CONNECTIONS



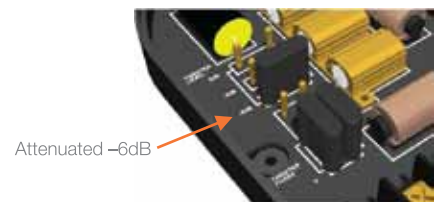
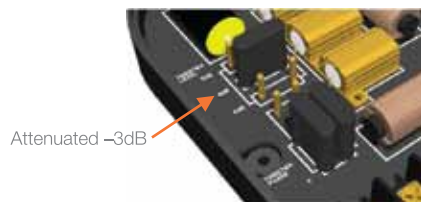
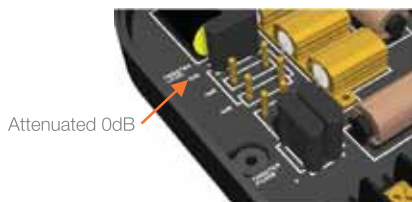
## REMOVING THE TWEETER FROM THE MOUNTING BASE



## ADJUSTING THE SOUND

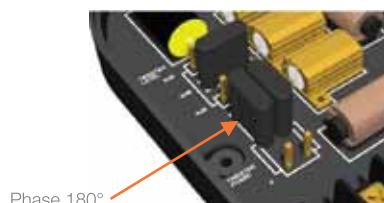
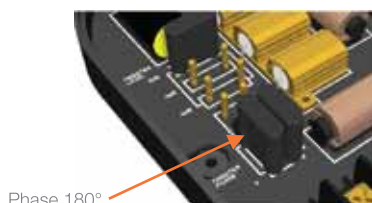
### ATTENUATION OF THE TWEETER

Adjust the output level of the tweeter to suit your preference according to the illustration below.



### PHASE REVERSAL

Depending on the mounting locations of the woofers and tweeters, it may be desirable to reverse the polarity of the tweeter to provide the best possible blend of sounds from the woofer and tweeter at the crossover frequency. Reverse the polarity of the tweeter using the jumpers marked "phase" in the crossover according to the diagram below.



HARMAN Consumer, Inc.  
8500 Balboa Boulevard, Northridge, CA 91329 USA

© 2011 HARMAN International Industries, Incorporated. All rights reserved. JBL is a trademark of HARMAN International Industries, Incorporated, registered in the United States and/or other countries. Features, specifications and appearance are subject to change without notice.

www.jbl.com

Cód.: 016675 Rev.: 01 - 04/11