



**JBL**

**JBL CINEMA SOUND™**  
HIGH-PERFORMANCE SOUND.  
NO-SWEAT INSTALLATION.

®

JBL

JBL



## JBL CINEMA SOUND. FAMILY HOME

**TAKE A SEAT AT THE CENTER OF A PRECISELY IMAGED 360-DEGREE SOUNDSCAPE.** Let the thunderous bass and brilliantly distinct dialogue wash over you. This is how you hear your favorite movies in theaters. Now, JBL Cinema Sound™ duplicates the experience at home – easily.

With only three Cinema Sound components, you (yes, you) can confidently assemble a sophisticated multichannel home theater audio system that not only enhances the look of your plasma or LCD video monitor, but also does full justice to its glorious high-definition picture.

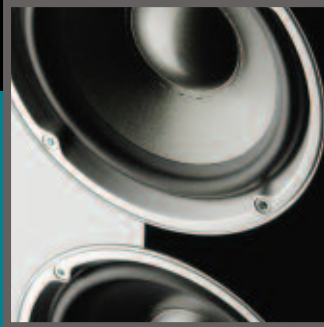


### YOU CAN DO THE MATH.

Four Cinema Sound towers plus one center speaker plus one powered subwoofer equals 5.1-channel surround sound, while six plus one plus one equals full-spectrum 7.1. Simple enough. But to make things even easier, all Cinema Sound speakers can be quickly gravity-mounted to any horizontal surface, without tools.



# THE ENTERTAINMENT SYSTEM WITHOUT OKAY, MAYBE JUST A LITTLE ROCKET SCIENCE.



#### HIGH-EXCURSION POLYPLAS - REINFORCED WOOFERS -

Stiffer cones deliver more uniform pistonic motion, for deeper, tighter bass. Cinema Sound's dual 5-inch cones, driven by 1-1/2-inch voice coils with neodymium magnets, are also light in weight, to deliver improved dynamic response with lower distortion.



#### TITANIUM-LAMINATE- DOME TWEETER WITH INTEGRAL WAVEGUIDES -

Elliptical Oblate Spheroidal™ (EOS™) waveguides, originally developed for JBL Pro LSR studio monitors, disperse clean, high-frequency sound more precisely, across a wider listening area. So sit wherever you're comfortable – you won't miss a thing.



#### FLOOR-FIRING SUBWOOFER WITH FREEFLOW™ PORT ARCHITECTURE -

Subwoofers are all about power, but the Cinema Sound subwoofer is also about finesse. It features a computer-optimized flared aperture to eliminate audible port noise.



#### STRAIGHT-LINE SIGNAL PATH™ (SSP™) NETWORK -

By taking the shortest possible route from the input terminals to the transducers, this proprietary crossover design minimizes noise and signal loss. So you'll hear everything your DVD and music sources can dish out.

PRO S



**NYLON STOCKINGS, FILM NOIR, THE DAWN OF AUDIO.** James B. Lansing leaves Western Electric (where he led the team that brought sound to the movies) to start JBL. First products: the D130, an innovative high-power, low-frequency transducer, and a high-frequency transducer that's still used by audio professionals more than 50 years later.

**BLUE SUEDE SHOES, MCCARTHY, THE ELECTRIC GUITAR.** As rock 'n' roll is born, JBL becomes the clear leader in studio and theater sound. Leo Fender chooses the D130 to amplify his electric guitars. And *LIFE* magazine calls the JBL Hartsfield the "dream speaker" for the amazing new world of hi-fi.

**VIETNAM, WOODSTOCK, SPACE.** JBL introduces the legendary 4320. With a high-frequency compression driver and acoustic lens in a 4-way configuration, it becomes the definitive studio monitor of the Space Age. And JBL becomes standard equipment at major rock concerts. Remember that little gathering at Woodstock, NY? (We're with the band, man.)

**POLYESTER, WATERGATE, SATURDAY NIGHT FEVER.** By 1976, a Billboard survey ranks JBL studio monitors number one. And JBL Pro technology comes home with the L-100, a consumer version of the 4300 Series, one of the best-selling speakers of the decade (and vastly better looking than the clothes of the era).

**MIAMI VICE, MASTERS OF THE UNIVERSE, MTV.** The Academy of Motion Picture Arts and Sciences chooses JBL components to introduce 70mm Dolby® stereo in showcase theaters. JBL introduces titanium diaphragms and Bi-Radial® horns in professional studio monitors.

**GEN X, DOT-COMS, DVD.** JBL's professional innovations come thick and fast: Vented Gap Cooling,™ Optimized Aperture™ horns, rapid-flare low-distortion compression drivers. JBL corners the THX® cinema market. And JBL near-field studio monitors lead in 5.1- and 7.1-sound mixing and mastering.

**PLASMA TV, SACD,™ JBL CINEMA SOUND.** Low-resolution video and stereo-era audio pass into oblivion, and a new era of home entertainment begins. With proven, professional technologies and a radically simple design philosophy, JBL Cinema Sound brings the captivating experience of movie house and concert hall performances home, in a sophisticated system you can design and install yourself.



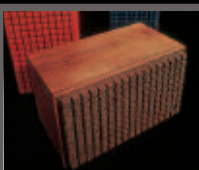
1940's



1950's



1960's



1970's



1980's



1990's



TODAY

## OUT THE ROCKET SCIENCE.



**DISTORTION-FREE COMPOSITE ENCLOSURES** - Rounded at the back to minimize unwanted resonances, Cinema Sound's high-style, high-tech enclosures are virtually distortion-free, in the longstanding JBL tradition.

You hear JBL in places where sound is everything: Lucasfilm's Skywalker Ranch, Polygram Records, the Sydney Opera House, CBGB. You hear us in places you wouldn't have guessed we'd be: Beijing's Great Hall of the People, the Library of Congress, the Reykjavik Ice Stadium, Disney World. You hear us in places that have only great sound in common: the Grand Ole Opry,™ the Royal Shakespeare Theatre, the Georgia Dome and Hard Rock Cafes around the world. And you hear us in places that are highly relevant to the immediate topic at hand: Loews Cineplex, AMC and United Artists cinemas nationwide, not to mention Mann's Chinese and Directors Guild of America theaters in Hollywood, and the Samuel Goldwyn theater in Beverly Hills. JBL professional equipment has been setting – and continually raising – audio performance standards in theaters, concert halls, recording studios and arenas around the world for more than 50 years. It's what makes JBL JBL.

# SOUND COMES HOME

**MOVIE CRITICS MEASURE EXCITEMENT IN TERMS OF STARS OR THUMBS. WE GO A LITTLE HIGHER-TECH.**

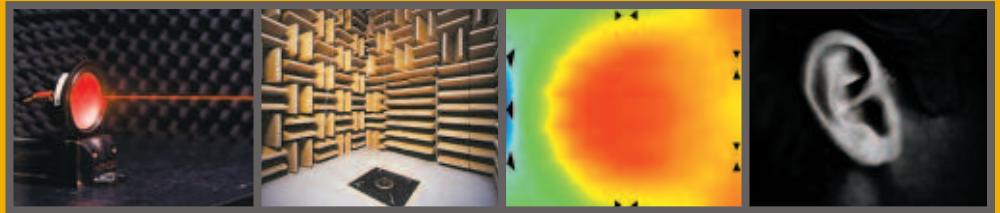
**REAL-TIME FFT LASER VIBROMETRY.** Measuring the infinitesimal is (or should be) an audio engineer's stock-in-trade, and the more precise the measurement tools, the better the result. JBL engineers use lasers to test the performance characteristics of various transducer materials and laminates, to find those least likely to produce unwanted resonances during peak audio passages. It's exacting work, but JBL has to do it.

**IMPROVED ANECHOIC CHAMBERS.** Imagine a room so sonically inert that sound reflections can't happen. Such a room is costly to produce, but it's the only way to conduct ultra-precise measurements of a loudspeaker's primary output. JBL has invested in new anechoic chambers to improve our understanding of how materials and coatings and manufacturing techniques affect loudspeaker performance.

**MULTIAXIS ANALYSIS.** Suppose, just suppose, that your TV room isn't perfectly shaped. Is your queen-size convertible sofa going to screw up the nearly perfect output of your JBL Cinema Sound system? The answer lies in a complex combination of literally thousands of on- and off-axis responses, which we've precalculated for your convenience.

Rest assured, JBL Cinema Sound speakers have been optimized for real-world rooms filled with real-world furniture.

**THE MOST SOPHISTICATED INSTRUMENT OF ALL.** Trained or untrained, professional or amateur, the human ear is and will always be the final arbiter of sound. And for all our technology, we're still heavily reliant on it. Like all our products, JBL Cinema Sound loudspeakers have passed stringent listening tests with people in all types of listening environments. Which is why we can confidently predict how you'll feel when you hear them for the first time. We have a feeling it will be some variation on the very first spoken line of movie dialogue (which our founder, James B. Lansing, was instrumental in enabling) – "You ain't heard nothin' yet."



**CST55**  
2-Way, dual 5" (130mm) satellite loudspeaker



**CSC55**  
2-Way, dual 5" (130mm) center channel loudspeaker



**CSS10**  
10", 150-Watt powered subwoofer

# SPECIFICATIONS

Frequency Response	55Hz to 30kHz (-6dB)	55Hz to 30Hz (-6dB)
Maximum Recommended Amplifier Power	150W*	150W*
Power Handling (continuous/peak)	50W/300W	50W/300W
Sensitivity (1 watt/1 meter)	90dB	90dB
Nominal Impedance	8 Ohms	8 Ohms
Tweeter	One 3/4" (19mm) titanium-laminate dome, video-shielded	
Woofers	Dual 5" (130mm) transducers with PolyPlas™ cones, neodymium magnets and HeatScape™ motor structure; video-shielded	
Dimensions (H x W x D)	46" x 8" x 6-1/2" (1168mm x 203mm x 165mm)	6-1/4" x 26-1/4" x 4-1/4" (159mm x 667mm x 108mm)
Weight	17 lb (7.7kg)	10 lb (4.5kg)

Frequency Response	27Hz to low-pass-crossover setting at signal source
Amplifier Power	150W RMS
Inputs	Line-level/LFE
Woofers	10" (250mm) PolyPlas™ cone and HeatScape™ motor structure; video-shielded
Dimensions (H x W x D)	18-1/4" x 13-1/4" x 16" (464mm x 337mm x 406mm) (including feet)
Weight	43 lb (19.5kg)

All features and specifications are subject to change without notice.

\* The maximum recommended amplifier power rating will ensure proper system headroom to allow for occasional peaks. We do not recommend sustained operation at these maximum power levels.


The JBL logo is displayed in white, bold, sans-serif capital letters on a solid orange square background.

## PRO SOUND COMES HOME™

JBL Consumer Products  
250 Crossways Park Drive, Woodbury, NY 11797  
8500 Balboa Boulevard, Northridge, CA 91329  
516.255.4JBL (4525) [www.jbl.com](http://www.jbl.com)

© 2005 Harman International Industries, Incorporated.  
All rights reserved.

Part No. CINSOUNDLIT11/05 Printed in USA

 A Harman International® Company

JBL, Harman International and Bi-Radial are registered trademarks, and EOS, FreeFlow, HeatScape, JBL Cinema Sound, Optimized Aperture, PolyPlas, Pro Sound Comes Home, Straight-Line Signal Path and Vented Gap Cooling are trademarks, of Harman International Industries, Incorporated.

Dolby is a registered trademark of Dolby Laboratories.

Grand Ole Opry is a registered trademark of Gaylord Entertainment Company.

SACD is a trademark of Sony Electronics Inc.

THX is a registered trademark of THX Ltd.

Designed, edited and digitally produced by the  
Harman Consumer Group Marketing & Design Center, Woodbury, NY.

